



QuickDesign Datalink

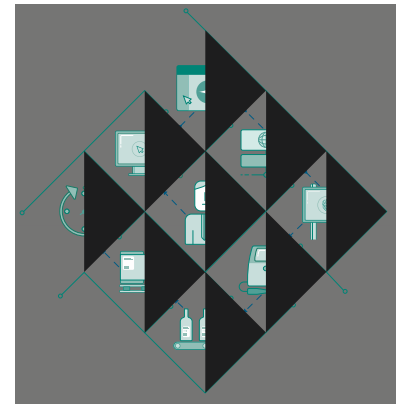
Centralised message control & data management

QuickDesign Datalink is a module of **QuickDesign** which makes it possible to print product codes and label data directly from central databases. By linking to a master data source, such as a product table, ingredients list or production table, duplication and updates can be managed. **Datalink** provides vastly improved data accuracy, storage and management costs.

Central updates to the database are automatically available to the coding and marking system without the need for further data entry or message design.

Based on standard ODBC connectivity, **QuickDesign Datalink** is easy to configure and seamlessly connects coding and databases.

Datalink also features the **QuickDesign** label designer for all message and label design requirements, as well as touch-optimised, **Operator Pro** screens for error-free product or job selection on the factory floor.



thinkINTEGRATION

Turn to **QuickDesign Datalink** for:

Better data accuracy and reduced data maintenance costs

Best practice data management with templates linking to master central database

Faster, error-free product changeovers

Operator Pro enables all coder messages to be configured from the single push of a button or barcode scan

At a glance status

View status of all coders from central easy to understand **Operator Pro** screen

Scalability, flexibility and future-proofing

Configurable from a central PC and/or coder through to a site-wide solution. The flexible **QuickDesign** platform ensures future proofing and scalability

Simplicity

One simple label designer and operator screen regardless of printer technology

Operator Pro with **Datalink**



These easy-to-use screens ensure error-free selection of messages, products and production jobs and ensure correct deployment on the production line. Fewer recalls, greater accuracy and better efficiencies, **Operator Pro** is easily configured to match your production processes and is optimised for touch screen devices.

QuickDesign Automation Modules deliver powerful integration and automation for a broad range of coding and labelling applications. Based on the **QuickDesign** platform, the automation modules address real-world production applications with a range of packaged features developed and refined by our extensive experience within manufacturing environments. For more information about the full Domino Integration & Software range please visit www.domino-printing.com/integration



CONTACT US

TALK TO AN EXPERT

+91-900 900 6612
enquiry@dominoindia.com
www.domino-printing.com



KNOW MORE